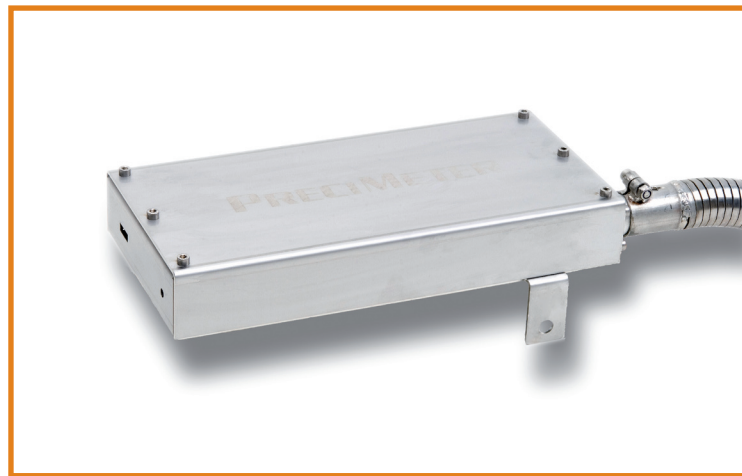


# PRECIMETER

*~Casting Evolution~*

## ProH Narrow



- Laser class II
- Compact design
- Easy to install
- Stable readings even in harsh conditions
- No safety measures required
- PC Software included

# ProH Narrow



The Digital Camera Sensor Family **ProH** from Precimeter combines high performance laser triangulation with all the control functions you need to maintain an accurate molten metal level. The patented digital camera technology in the Precimeter sensors (US patent no 4,911,551), results in very high performance and accuracy. This enables the use of Laser Class II, which means that no special safety measures are required. The advanced technology makes it possible to give stable readings even when the material reflectivity changes dramatically and in harsh conditions like steam and smoke. The built in PI controller eliminates the need for an external industrial controller. This reduces the system cost and set up time.

Technical Specifications		Advantages
<b>Sensor type:</b>	<b>ProH CD900R600</b>	<ul style="list-style-type: none"> <li>• No safety measures required, no yearly eye examination, no laser officer required.</li> <li>• Stable readings even in difficult environments</li> <li>• Laser class II approved.</li> <li>• Easy to install</li> <li>• Compact design</li> <li>• Metal Level Control systems adapted to our actuators and sensors are available</li> <li>• <b>PC Software</b> gives access to all sensor parameters.</li> </ul>
<b>Clearance Distance:</b>	900 mm (35.4")	
<b>Measurement Range:</b>	600 mm (23.6")	
ProH Narrow is specially designed for launder, furnace and mold level control where the need of level control is better than $\pm 0.5$ mm (0.02")		
Light source:	Laser diode 635 nm (visible red)	
Laser power:	<1 mW, Class II	
Sampling frequency:	252 Hz	
Communication:	RS232-C	
Analog output:	4-20 mA (optional 0-10 VDC, 0-20 mA)	
Temperature output:	4-20 mA (0-100 C)	
Resolution:	0.15 mm / 0.006"	
Power requirement:	18-32 VDC, < 1 A	

## Contact Precimeter Group

### EASTERN AND CENTRAL EUROPE DIE CASTING AND EM PUMPS

Carli Precimeter GmbH  
Kirberg 5/ 51674 Wiehl/ DE  
Phone: +49-2262-701624 Fax: +49-2262-701625

### WESTERN EUROPE, MIDDLE EAST, AFRICA, ASIA AND AUSTRALIA

Precimeter Control AB  
Östra Hamnen 7/ SE-475 42 Hönö/ SE  
Phone: +46-31-764 55 20 Fax: +46-31-764 55 29  
[www.precimeter.com](http://www.precimeter.com)  
[info@precimeter.com](mailto:info@precimeter.com)

### NORTH, CENTRAL AND SOUTH AMERICA

Sentech Precimeter Inc.  
2215 S. 48th Str. #C / Tempe, AZ 85282/ U.S.A  
Phone: +1 (480) 829-1923 Fax: +1 (480) 894-5546

## Local Precimeter Contact